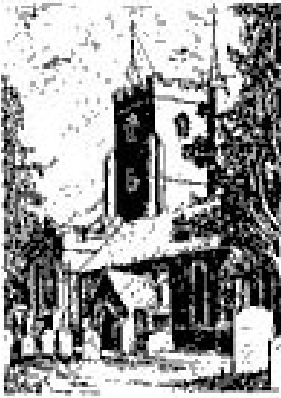


RENDEZVOUS



The Magazine of the Folkestone Town Benefice of
St Mary and St Eanswythe
with
St Saviour

Volume 53 No, 1 **January 2026** **£1.20**



Who's Who in the Parish

Clergy

Priest-in-Charge Rev Christopher Johnson

07931 804952

vicar.mefolkestone@gmail.com

St Mary & St Eanswythe's

Parish Administrator	Santa Vessey	Office Hours Monday - Friday 11 a.m. - 1 p.m.	01303 252947
		email: sainteanswythe@gmail.com	
Churchwardens	Tom Bertram,	07748 434341	01303 890986
	Andrew Plested, 201 Canterbury Road	07860 175123	01303 241124
PCC Hon. Secretary	Santa Vessey		01303 252947
	email: sainteanswythe@gmail.com		
Hon. Treasurer	} Jenny Coleman,		
Gift Aid	}		
Planned Giving	Pam Keeling		
PCC Members	Jan Clarke	Jenny Coleman	
	Marilyn Edey	Vicky Friedrich (Synod Rep)	
	Elaine Furminger	Catriona Hunter	
	Carol McBeath	Patricia Skelsted	
If you would like to get in touch with any member of the PCC please contact the Parish Office (01303 252947)			
Electoral Roll	Santa Vessey		01303 252947
Organist and Choir Director	<i>vacant</i>		
Children's Church	Clare Tomlinson		07751 423796
Safeguarding Lead	Tom Bertram	07748 434341	01303 890986
Safeguarding Officer	Caroline Hayward	cazrolinehayward@gmail.com	07876 358918
Church Day Schools	St Mary's, Warren Road	Head Teacher - Richard Paez	251390
	St Eanswythe's, Church Street	Head Teacher - Claire Jacobs	255516
Church Flowers	Jan Clarke and Jenny Coleman		
Church Welcomers	Pam Keeling	tpdkeel@aol.com	
Bell Ringers	Mike Godfrey, 6 Cauldham Lane, Capel-le-Ferne		01303 242159
Rendezvous Advertising	Paul Furminger, 37 Dymchurch Road, Hythe		01303 265547
	(e-mail: epmfurminger@btinternet.com)		
Rendezvous Assembler	Andrew Plested (e-mail: andrew_plested@yahoo.co.uk)		01303 241124
Rendezvous Distribution	Catriona Hunter (e-mail: trina@monrepos.org)		01303 248006

St Augustine's Centre

Bookings:	Santa Vessey	01303 252947
	email: sainteanswythe@gmail.com	

Front Cover: Epiphany in stained glass

Deadline for the next Rendezvous Edition: 20th of the month, but December 10th for the January edition. Please submit articles in 16 point text - this shows you how much fits on a page once it is reduced for printing.

Please contact Andrew Plested as above

CALENDAR

Services and Events in January 2026

Thu	1	10:30	Holy Communion
Sat	3	12:00	The Rainbow Centre Walk of Kings
Sun	4	Epiphany Sunday	
		10:30	SUNG EUCHARIST
Thu	8	10:30	Holy Communion BCP
Sun	11	First Sunday of Epiphany Baptism of Christ	
		10:30	SUNG EUCHARIST with Children's church
Mon	12	8:30	St Eanswythe's school PTFA coffee morning
Thu	15	10:30	Holy Communion BCP
Sun	18	Second Sunday of Epiphany	
		10:30	SUNG EUCHARIST
Thu	22	10:30	Holy Communion BCP
Sun	25	Third Sunday of Epiphany Conversion of St Paul	
		10:30	SUNG EUCHARIST
Thu	29	10:30	Holy Communion BCP



February

Sun	1	Fourth Sunday of Epiphany 4	
		10:30	SUNG EUCHARIST
		16:00	Choral Evensong for Candlemas
Thu	5	10:30	Holy Communion BCP
Sun	8	Second Sunday before Lent	
		10:30	SUNG EUCHARIST with Children's church
Mon	9	8:30	St Eanswythe's school PTFA coffee morning
Thu	12	10:30	Holy Communion BCP
Sat	14	18:00	Supper with the Saints
Sun	15	Sunday before Lent	
		10:30	SUNG EUCHARIST
Wed	18	Ash Wednesday	
		10:30	EUCCHARIST
		19:30	SUNG EUCHARIST
Thu	19	10:30	Holy Communion BCP
Sun	22	First Sunday of Lent	
		10:30	SUNG EUCHARIST
Thu	26	10:30	Holy Communion BCP



Mailing List

We now have a regular weekly e-mailing list which is free to join. You can scan the QR code to sign up, or you'll also find a link on the homepage of our website: stmaryandsteanswythe.org

Don't forget the Donation Station!

There are so many ways that you can make donations or pay for our range of merchandise.

Cash and cheques can be placed in the box by the main door, and credit card payments can be made in several ways:

- by scanning the QR code on the weekly pew sheet or the back of Rendezvous;
- by clicking the Donate Button on our website; or
- by using the Donation Station adjacent to the sales table.

The Donation Station is a very easy way to donate or pay by credit card. It has a touch screen, works just like the card machines in shops and takes contactless and chip-and-pin payments. You can even add Gift Aid to your donation. If you need a hand with it the first time, just ask for help.

Why not subscribe to Rendezvous in 2026?

Subscriptions to Rendezvous run from January to December each year and payment for 2026 is now due. The **annual subscription rate for 2026 is £12**, (the same price as last year), which saves you £2.40 on the cost of 12 individual issues – or to look at it another way, buy 10 get 2 free! If you have any questions about subscriptions or distribution, please contact Catriona Hunter, Distribution Coordinator. Her contact details are on the inside front cover of every issue of Rendezvous.

Parking in the School Playground

We are grateful to the Headteacher of St Eanswythe's School for allowing us to use the school playground as a car park on Sundays and on other occasions.



The church is open for private prayer. The schedule is:

- 11.00-13.00
Wednesday, Thursday,
Friday, Saturday

Church Hire

For information about hiring the church, with or without use of the grand piano please contact the Parish Office

sainteanswythe@gmail.com

01303 252947

The **Woodward Hall** is available for hire for Wedding Receptions, Family Parties, Club Meetings etc. Details from Tracy Arnold at St Eanswythe's School on 01303 255516 during school hours



Priest's Letter

From Father Chris



Someone asked me recently whether there's a stock of 'vicar's letters' or themes that one can use for this sort of thing. They also asked if there's a risk of repeating yourself year by year. There probably is, and it's avoided more by luck than judgement! As it's only my second 'January Letter', students of the *Rendezvous* back catalogue can make up their own minds. The same risk also goes with preaching, but it's likely best we don't go there for this letter...

That said, it got me thinking a little bit, because January is often a time of New Year's Resolutions and the sense that 'we ought to do something different this year'. We do this as if we haven't made the same resolutions before and kept them going whether we realised or not. Or, we got half-way through January last year and thought running in the rain or dark nights without pudding was a good plan. (If you've managed to maintain your resolution, bravo!).

But, then again, each of us is different from how we were this time last year. The way we think about things, the way we receive the ideas we hear, the way we experience different aspects of life will have shifted and developed – hopefully for the good (though it's not always a guarantee). There's also the hope that we can see some of those shifts and take the chance either to develop the good or to arrest the decline (into too-frequent biscuit consumption or maybe something more serious).

Cardinal (now 'Saint') John Henry Newman once wrote, 'To live is to change, and to be perfect is to have changed often.' Each of us is subject to change, around us and within us. By God's grace and leading we can use that for good and try to work towards that perfection. We won't quite reach it in this lifetime, but that's not an excuse not to keep working on it!

If the sea-swimming isn't for you this year, what other things might you work on or pay attention to and how might you invite God into that work - who knows where or, indeed, *who* you might be by this time next year?

With every blessing for the New Year,

**For those who missed the Translation Service
or would like to see it again**

View the recorded service using the link
<https://flic.kr/s/aHBqjBS9ny>

The Reader's Ramblings

Epiphany: Light for the Journey



January always feels like a threshold month. The festivities of Christmas fade, the decorations come down, and we find ourselves standing at the doorway of a new year, wondering what lies ahead. In the Church's calendar, though, January is not simply about endings. It ushers us into the season of Epiphany — a time of revelation, of light breaking into the ordinary, of God making Himself known.

The word epiphany means “manifestation” or “appearance.” For Anglicans, the feast of Epiphany on 6 January recalls the visit of the Magi, those mysterious travellers from the East who followed a star to Bethlehem. Their journey reminds us that Christ's birth was not just for one people or one place, but for the whole world. The Magi's gifts — gold, frankincense, and myrrh — speak of kingship, worship, and sacrifice. In them we glimpse the fullness of who Jesus is: King, God, and Saviour.

But Epiphany is more than a single day. It stretches into a season, inviting us to reflect on the many ways Christ is revealed. We hear of His baptism in the Jordan, where the heavens open and the Spirit descends like a dove. We listen to stories of His first miracles, signs that point beyond themselves to the glory of God. Each moment is a shining forth, a reminder that the light which began in Bethlehem continues to spread, illuminating hearts and lives.

For us, Epiphany can be a season of attentiveness. Where is Christ being revealed in our own lives, our communities, our world? The Magi had eyes to see the star and courage to follow it. We too are called to look for signs of God's presence — sometimes in unexpected places. It may be in the kindness of a neighbour, the resilience of those facing hardship, or the quiet beauty of creation on a winter's morning. Epiphany teaches us to recognise that God's glory is not confined to church walls but shines in the everyday.

There is also a challenge here. The Magi did not simply admire the star; they acted upon it. Their journey was long, uncertain, and costly, yet they persevered until they found the child. Epiphany asks us not only to notice God's light but to respond. What paths might we need to take this year in order to draw closer to Christ? What gifts can we offer Him — not gold or frankincense, but our time, our talents, our love?

As we step into January, perhaps we can carry the spirit of Epiphany with us: eyes open to God's revealing, hearts ready to worship, lives willing to follow wherever He leads. The star still shines, and the journey continues. May we, like the Magi, be seekers of the light, pilgrims of hope, and bearers of good news in the year ahead.

Vicky

Children's Church! @



What's it all about?

SUNDAY 14TH DECEMBER

IT'S ALL ABOUT
CHRISTINGLE!



SUNDAY 11TH JANUARY

IT'S ALL ABOUT
BEGINNINGS!



SUNDAY 8TH FEBRUARY

IT'S ALL ABOUT
THE LITTLE THINGS!



SUNDAY 8TH MARCH

IT'S ALL ABOUT
LIVING WATER



Children's Church begins in church at 10:30am.

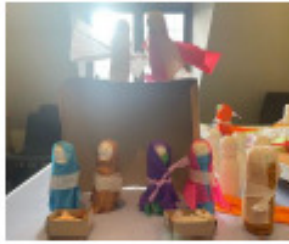
We do hope you can join us for...

singing, making things, learning about Jesus and much, much more!

To find out about it, ring Clare Tomlinson 07751 423 796

(Children must be brought by an adult, and under 5's must be supervised)

Children's Church – the year in pictures!



Advent 2024

Making a crib to help us look forward to Christmas.

Christmas Eve – collecting our Birthday Cakes for Jesus at the Crib Service.



2025

January



Making marvellous mobiles to help us remember that God the Father, God the Son and God the Holy Spirit, **all know us!**



February

HOLY! HOLY! HOLY!

sang the angels and Isaiah said, "Send me!" and we say that too!



Lent

We each made our own book of God's guides to life as we thought about the best way to live.

On Palm Sunday

we thought about the CROSS with resurrection eggs



Followed by our.....

Good Friday Special

Friday 18th April 2025

St Mary and St Eanswythe's Church

Church Street, CT20 1SE

10am - 12pm



And then our Easter Egg hunt after the service
on **Easter Day**



Alleluia, the Lord is risen!





In **MAY** it was all about TABITHA – another friend of God!



In **JUNE** we celebrated the church's birthday at **PENTECOST**
And had a wonderful picnic in the Vicarage Garden!



JULY saw us on stormy seas on Sea Sunday



In **AUGUST** we made lanterns to help us remember to be ready for Jesus!

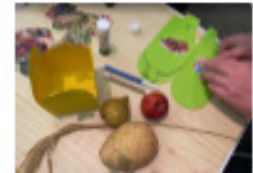




It was
party time for St Eanswythe in
September



Gifts and gift boxes in **October** for
Harvest Festival



In **November** we made poppies to remember
those who died in the war and we thought too
about being alive with Jesus.



All of which brought us back to
crowns for Christ the King and
stirring up our Birthday Cakes
for Jesus at a super activity
morning at the end of
November.



**HAPPY 2026 TO EVERYONE FROM
CHILDREN'S CHURCH!**

Sunday and Red Letter Eucharist Gospels

Sunday 4 January – Second Sunday of Christmas : John 1.10-18

Grace and truth came through Jesus Christ

The promise of redemption and new life made known through the Old Testament prophets was fulfilled in Christ.

Sunday 11 January – The Baptism of Christ : Matt. 13-17

I need to be baptised by you, and you come to me?

By receiving baptism, Jesus showed his total identification with the human race and gave an example of witness for his followers to continue.

Sunday 18 January – Second Sunday of Epiphany : John 1.29-42

Jesus said to them, 'Come and see.'

Christ is the light who gives spiritual sight and guides his followers to be faithful to the end.

Sunday 25 January – The Conversion of Paul : Matt. 19.27-30

Many who were first will be last and the last will be first

The call of God may come early or late in life, but when it comes the change is greater than anything the human will could choose.

Major Festivals – Red Letter Days

Thursday 1 January – The Naming of Jesus: Luke 2.15-21

He was called Jesus, the name given by the angel

Names have their significance and their power. The name of Jesus is most sacred for Christians and a sign that he accepted every custom of human life.

Tuesday 6 January - The Epiphany: Matthew 2.1-12

On entering the house they saw the child with Mary his mother and they knelt down and paid him homage.

The Wise Men were the first gentiles to see and acknowledge Christ. Their homage was a sign that the whole of the human race would be included in the salvation he brought.

Did you know?

Saint Sylvester was a 4th century Pope. He's a significant historical figure, with his feast day is Dec 31, leading to "Silvester" being the German name for New Year's Eve.

Help Us Enter the New Year

God of all time, help us enter the New Year quietly,
thoughtful of who we are to ourselves and to others,
mindful that our steps make an impact
and our words carry power.

May we walk gently.

May we speak only after we have listened well.

Creator of all life,
help us enter the New Year reverently,
aware that you have endowed
every creature and plant, every person and habitat
with beauty and purpose.

May we regard the world with tenderness.

May we honour rather than destroy.

Lover of all souls,
help us enter the New Year joyfully,
willing to laugh and dance and dream,
remembering our many gifts with thanks
and looking forward to blessings yet to come.

May we welcome your lavish love.

In this new year,

may the grace and peace of Christ

bless us now and in the days ahead.

*Vinita Hampton Wright
The Jesuit website*



Dates For Your Diary

Some forthcoming events in our church calendar. Please put these in your diary

Saturday, 18 October – Sunday 29 March	Closed Mondays	What Remains? Exhibition at The Beaney, Canterbury. <i>St Eanswythe's original lead reliquary is included in the display.</i>
Saturday, 3 January	12 noon	Hosting the Walk of Kings
Sunday, 11 January	10.30 a.m.	Children's Church <i>It's all about beginnings</i>
Sunday, 25 January	12.30 p.m.	PCC Meeting
Sunday, 1 February	4 p.m.	Evensong for Candlemas
Sunday, 8 February	10.30 a.m.	Children's Church <i>It's all about the little things</i>
Wednesday, 18 February		Ash Wednesday <i>First day of Lent</i>
Sunday, 8 March	10.30 a.m.	Children's Church <i>It's all about living water</i>
Monday, 23 March	7 p.m.	PCC Meeting
Sunday, 29 March		Palm Sunday
Thursday, 2 April		Maundy Thursday
Friday, 3 April		Good Friday
Sunday, 5 April		Easter Sunday
Thursday, 14 May		Ascension Day
Thursday, 14 May – Sunday, 17 May		Sacconi Quartet Chamber Music Festival
Monday, 18 May	7 p.m.	PCC Meeting
Sunday, 24 May		Pentecost

I A I N . S

Radford Electrical

C O N T R A C T O R S



NICEIC
APPROVED
CONTRACTOR

Solar PV & Battery Installs • Landlord Certificates - EICR
EV Charging Points - OZEV Approved
Domestic • Commercial • Industrial



ECA
Confederation of Electrical
& Engineering Services

WWW.RADFORD ELECTRICAL.CO.UK • 07775 871805

RICHARD AMOS

**18 The High Street
Hythe**

Antiques and Architectural Salvage
Items Bought and Sold
Telephone 01303 221050
Mobile 07785 594384

HOUSE CLEARANCE
Complete houses cleared
or single items purchased

also
RUBBISH CLEARANCE
Houses - Lofts - Garages -
Sheds
Garden Waste Cleared

7 Audley Road,
Folkestone
Kent CT20 3QA



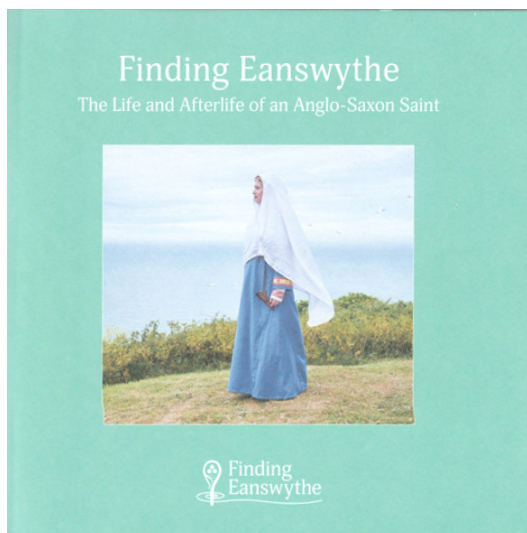
Our Windows

The 'before the Apple' stained glass window by Kempe after the restoration following the 1996 break-in. The restoration following the 2018 break-in is nearing completion - please see the article on Page 19.

...and this is our Epiphany Window - the adoration of the Magi by C E Kempe. This is on the left hand side of the Chancel, one of four but two were sadly lost in the Second World War. The other two were damaged, losing the text panel and sky. The other Annunciation window is opposite above the door to the Vestries.



Finding Eanswythe



Whilst the Finding Eanswythe Project has come to a conclusion, the working group will continue with their research. This book covers the findings over the six-year programme with a series of essays covering such topics as The Legend of St Eanswythe, A Minster in the early Mediaeval Landscape, Minster to Priory, Folkestone and the English Reformation, St Eanswythe's Water, St Eanswythe's Chapel, Matthew Woodward and Eanswythe Found. All by various members of the Research Group.

This 54 page book is available from our sales table priced at **£5**.

			7			4		
	8				1			2
		7	4					5
		2	8	7		1		
9			1					7
		6			3	8		
5					9	6		
6			5				8	
		9			4			

		3	4				1	7
		1	8					
		9			6		5	8
4					1			
8	1			3			4	6
			6					5
1	2		7			6		
					5	2		
9	6				4	5		

We all love our church and its beauty and we want it to look as wonderful as possible as we are expecting lots of visitors.

We are desperate for helpers with the cleaning - we have a very small and dedicated team but **WE NEED MORE PEOPLE!**

Please get in touch with Jenny Coleman

email sainteanswythe@gmail.com

News from the Tower

Here at St Mary & St Eanswythe we have 8 lovely bells with the heaviest weight just over 25 cwt. We ring at 10 a.m. Sunday mornings for the 10:30 morning service. We also practice on Tuesday afternoons between 2:30 - 4:00 p.m.. It is our plan to change the time at the end of April to 4:00-5:30 p.m.. We currently have 7 members in the band but could do with some more people to learn to ring.

The Central Council of Church Bell Ringers says "If you roll forward the current demographic profile of ringing 20 years, keeping recruitment as it is, there won't be that many active ringers - many ringers are now over 60, and too few are under 25".

So if you want bells to continue ringing please come and join us. Bell ringers come from all walks of life and can range in age from about 10 or 11 up to, well there isn't really an upper age limit. It all depends on general health and fitness.

If you would like to find out more about bell ringing, please contact me on 07955 599 498.

We also rang for the VE Day 80 celebrations on 8th May 2025 at 6:30 p.m.

David Robinson - Tower Captain

The Canterbury Auction Galleries

FINE ART AUCTIONEERS SINCE 1911

Auctioneers of the rare, the collectible and the exceptional



2026 AUCTION DATES

13th & 14th

FEBRUARY

Consignment deadline
now closed

10th & 11th

APRIL

Consignment deadline
6th March

5th & 6th

JUNE

Consignment deadline
1st May

31st & 1st
JULY & AUGUST

Consignment deadline
26th June

2nd & 3rd

OCTOBER

Consignment deadline
28th August

27th & 28th

NOVEMBER

Consignment deadline
23rd October

Have something to sell?

From watches, jewellery, cameras, art and antiques to 20th Century collectibles, The Canterbury Auction Galleries has a strong track record in achieving worldwide saleroom prices.

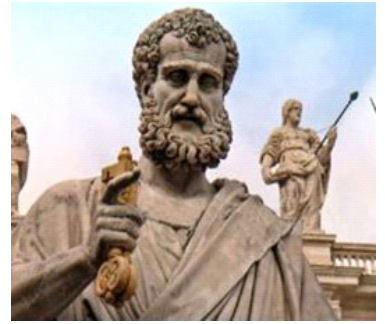
Contact us today for a free valuation

Telephone **01227 763337** Email general@tcag.co.uk Visit thecanterburyauctiongalleries.com

Commemoration

Peter of Canterbury, Abbot 6 January

Made the first Abbot of St Peter and St Paul, Canterbury, later St Augustine's Abbey, Peter was presumed to be a native of Italy, like the other members of the Gregorian mission dispatched by Pope Gregory the Great in 596 to Christianise the Anglo-Saxons. The mission landed in Kent in 597 and soon converted King Ethelbert, who gave Augustine the land on which he founded the abbey that later became St Augustine's, Canterbury.



The medieval chronicler Bede records that sometime after the mission arrived in England, probably in late 600, Peter, along with fellow-missionary Laurence, was sent back to Gregory. This deputation was to relay the news of Augustine's successes in Kent and to request more missionaries. They also conveyed to the pope several inquiries from Augustine about how to proceed with the mission, and when they returned in 601, they brought back Gregory's replies to Augustine. Peter became the abbot of the monastery that Ethelbert founded in Canterbury, originally dedicated to the saints Peter and Paul, but later rededicated as St Augustine's. Peter drowned while crossing the English Channel on the way to Gaul, at a place called Ambleteuse, near Boulogne. His feast is 6 January.

Today we give thanks for Peter of Canterbury, abbot and emissary between Augustine and Gregory, first Abbot of St Augustine's. May his memory not be lost, just as his body was given a proper resting place after being rescued from the unsuitable grave near where he drowned. Amen



SUPPORTING ST MARY & ST EANSWYTHE'S CHURCH FINANCIALLY

Our church life costs approximately **£1500 a week** to run (not including special projects like Eanswythe Found or major building repairs).

BECOME A REGULAR DONOR

If you're tech-minded, there's this QR code or the website:
www.parishgiving.org.uk (click 'Find your parish' and enter parish code:
060606098)



You can also get a paper form from the Parish Office
or call PGS directly on 0333 002 1271 and quote the
parish code above.

If you have any questions or would like more information, do please get in touch with the Parish Office – contact details are inside the front cover of this magazine.

COULD YOU REMEMBER ST MARY & ST EANSWYTHE'S CHURCH IN YOUR WILL?

Your generosity could have a massive impact on future ministry here – even whilst you're rejoicing on another shore! Get in touch with the Parish Office for more information or to discuss it further.



Finding Eve...



Visitors to St Eanswythe's may have noticed that we have a bit of a gap in one of the window frames... (*left*) This was the result of a break in several years ago which left Eve somewhat the worse for wear (*bottom left*).

The restoration work is being undertaken by the stained glass studio at Canterbury Cathedral and it's proving to be a real challenge as the style of the historic glass by Charles Kempe is recreated.

Dr Leonie Seliger has sent some photographs (*right*) to show how it's

going but both the design and the chemistry involved has been quite something! Eve is being modelled on a similar window from Clumber Park in Nottinghamshire where Kempe worked extensively.



We're hopeful the window will return in 2026 and it will eventually show Adam and Eve *before* the apple was eaten (*note the serpent in the tree - below left*), whilst the surviving window shows Adam and Eve being expelled from the Garden of Eden (*below right*).





Bookworm: What Catriona Has Been Reading

Evensong: Notes From the Choir. A Light-hearted Guide to Choristers and Lay Clerks in Quires and Places Where They Sing – Timothy E Popple (2025)

Have you ever wanted to know more about evensong? Why it is as it is and why most of it is sung by the choir, with not a huge amount for the congregation to do? Or do you sing in the church choir and have similar questions, or just want to know a bit more? If so, this is the book for you.

For many people, especially choir members including myself, evensong is their favourite service and this marvellous book is both informative and laugh out loud humorous, without being at all silly. The author just has a very gentle form of humour that works extremely well in this subject.

The 12 chapters are set out in the order of the various parts of the service, so we have introit, préces, psalms, the first lesson, and so on. But each chapter includes other content as well, for example the chapter on the first lesson covers what the choir allegedly does during the readings, the early years of being in a choir, and advent. It's a very clever construction and works extremely well. The appendices cover such useful topics as good pubs near cathedrals (I have to confess to having been in a few of those listed), the times of evensong in every one of England's 42 cathedrals, and a glossary of terms.

The author started out as a chorister at Durham Cathedral and is currently an alto lay clerk at Bristol Cathedral. So he knows what he's talking about and has plenty of wonderful anecdotes up his sleeve.

I came upon this wonderful book completely by chance. It's the best book I've read for ages (and that's saying something). I strongly recommend it to anyone with the slightest interest in the subject. And no you can't borrow my copy, I'm not going to let it out of my sight!

And after you've read this, why not come along to our Evensong for Candlemas on Sunday 1 February at 4 p.m?

The Woman on the Bridge – Sheila O'Flanagan (2023)

The story is set in 1920s Dublin and relates lots of fictionalised but real historical events - it was inspired by stories that the author's grandmother told her about her own youth, and I suspect that there are a number of instances of fact being stranger than fiction.

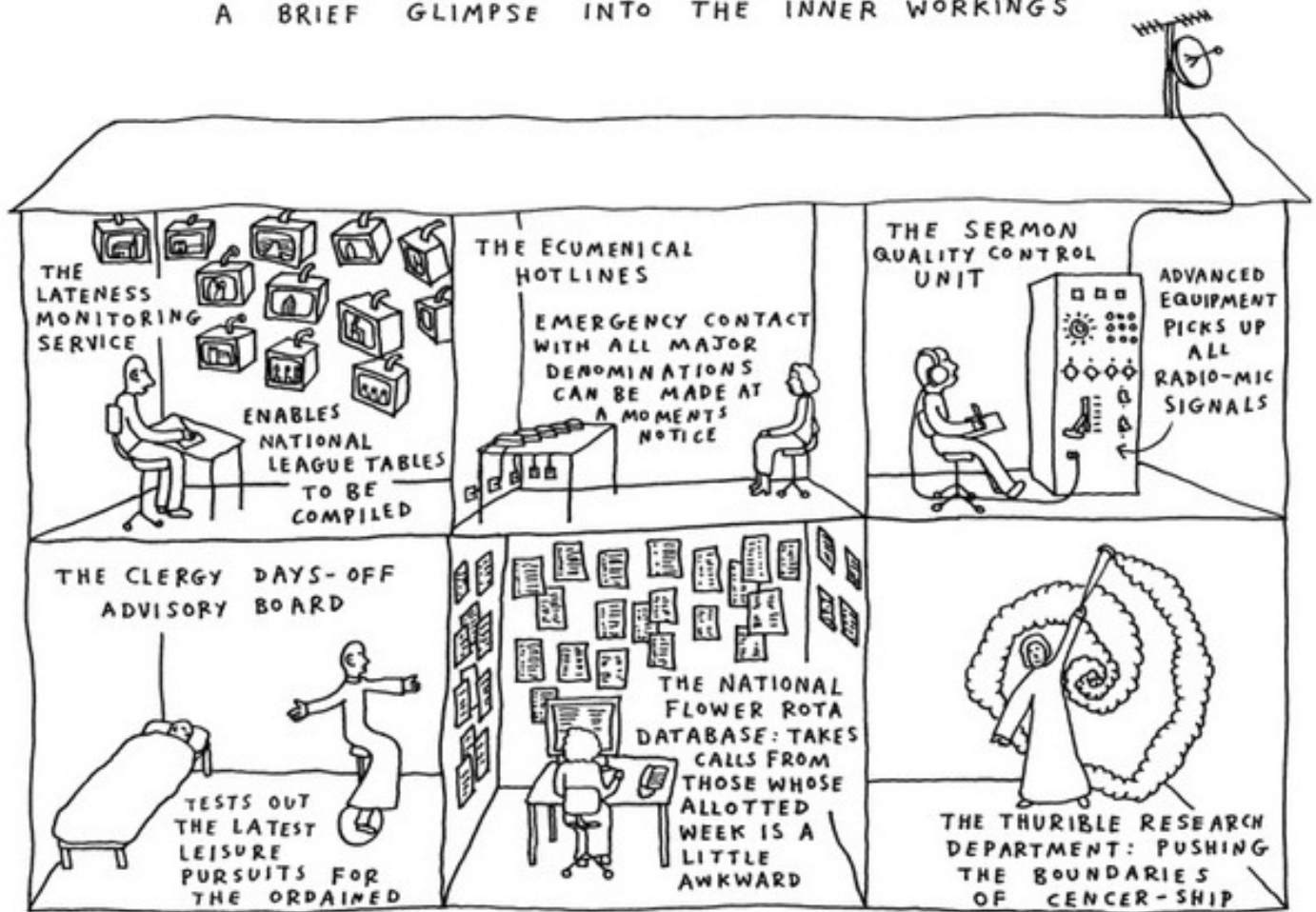
It's about the struggle for independence in Ireland - events that split families and broke up friendships. And about fighting for your beliefs, strong women, attitudes to women a century ago, the overwhelming power of the church, illness in a world without antibiotics, housing conditions, emigration in the hope of a better life, making choices, love and loss.

I really liked the main character Winifred O'Leary and found this an exciting, enjoyable and interesting read.

Catriona Hunter

CHURCH HOUSE

A BRIEF GLIMPSE INTO THE INNER WORKINGS



CartoonChurch.com

News from St Eanswythe' School

Dear All

I write this as we come to the end of a very busy, but enjoyable term. So much has happened, which the children have greatly enjoyed.

There has been the opportunity to take part and be part of many exciting trips and visits, to which we are grateful to staff for arranging them. Nativity plays, were again a huge success, and showcase how very talented our young ones are.

The final week saw Christmas dinners, class parties, visit from the Pantomime company and a trip to the cinema on Thursday. Our last "get together" as a whole school was at 2 p.m. on Friday when we were joined by parents, friends and families for our Carol Service and lighting of our Christingles, which ended the term on the right note, of what the Christmas message is about

Wishing you joy as we remember the miracle of Christ's birth this season, and may the glory of our saviour fill your hearts with peace and love.

With our love and prayers from all at St Eanswythe's School.

Kim

Telephone
255066

5 West Terrace
Folkestone

Anthony Cowie

Furnishing Fabrics
Loose Covers
Curtains and Blinds

*FURNISHERS OF
BEAUTIFUL HOMES*



David Payne Carpets

**Domestic and
Commercial Flooring**

108 Sandgate Road
Folkestone CT20 2BW
01303 257306

esther@davidpaynecarpets.co.uk
www.davidpaynecarpets.co.uk



HAIR NOW

**1 Church Street
Folkestone
Kent
CT20 1SE**

**01303 210711
07484 081808**

**Looking
FOR SOMETHING DIFFERENT**

We have a wide range of stylish
spectacle frames and sunglasses
from many of the top designers at
prices to suit every budget



Celebrating over 90 years of
professional eyecare
122 Sandgate Road, Folkestone
01303 254471



J. STEED

(Building Services) Ltd.
www.steedbuilding.co.uk

Building and Plumbing

Tel/FAX 01303 892488

Unit G Forge Meadow, Hawkinge,
Folkestone CT18 7JA

Help!!!!

I'm Empty

**To Advertise here
see page 24**

HELPFUL CONTACT NUMBERS

Rainbow Centre

69 Sandgate Road, Folkestone, CT20 2AF

email: enquiries@rainbow-centre.org

Telephone: 01303 850733

Help Through Hardship - to be assessed for a Shepway Foodbank Voucher and for other assistance **Telephone:** 0808 208 2138 Monday - Friday 9 a.m. - 5 p.m.

Samaritans

National telephone: 116 123 (this number is free to call)

email: Samaritans: jo@samaritans.org

The Salvation Army

Canterbury Road Folkestone CT19 5NL **Telephone:** 01303 251379

Website: www.salvationarmy.org.uk

email: folkestone@salvationarmy.org.uk

Cruse Bereavement Care

Telephone: 0844 8009104 **email:** southkent@cruse.org.uk

National helpline: 0808 808 1677

If you live in postcodes CT14 to CT22 and TN23 to TN30 you are located in the South Kent Area of Cruse and we are here to support you. Don't be put off because our Area Office is located in Ashford - in the majority of cases we travel to you.

Age UK

For advice on money, care or health 0800 055 6112

65 Shaftesbury Avenue, Folkestone CT19 4NS.

Telephone: 01304 272499 Opening hours Monday-Friday 9 a.m.- 4 p.m.

Citizens Advice

For advice and assistance on benefits, Universal Credit, debt, employment, housing, legal issues.

Telephone 01304 353861 – for a local advice and call back service.

Telephone 0808 278 7961 - for free Kent advice line service

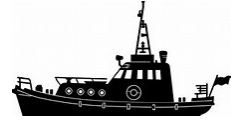
Website www.citizensadvice.org.uk

Drop ins - Thursdays only - 10 a.m. - 3 p.m, at Rainbow Centre, 1st Floor, 69 Sandgate Road, Folkestone CT20 2AF



Wanted

Advertisers for
Rendezvous Magazine



Advertising Rates: £40 per annum for one sixth of a page
£60 per annum for one third of a page
£90 per annum for one half of a page
£180 per annum for one full page



please contact **Paul Furminger**
01303 265547
epmfurminger@btinternet.com



NZ PLUMBING AND HEATING Ltd.



Mark Smith

07810 872751

nzplumbingandheating@gmail.com

Wanted

Advertisers for
Rendezvous Magazine

Please contact **Paul Furminger**
e-mail: epmfurminger@btinternet.com



www.sterryfuneral.co.uk

- 24-hour service
- Bereavement advice
- Transparent pricing
- Home visits
- Private chapel of rest
- Floral tributes
- Eco/Greenspecialists
- Prepaid funeral plans



Sterry Funeral Service



Hythe

01303 264 400

41 High Street,
CT21 5AD

Folkestone

01303 272 525

93 Cheriton High Street,
CT19 4HE

Call us for immediate support, advice or to
arrange a home visit. We are here to help
24 hours a day.



MUSIC NOTES

Bayle Music starts 2026 with an enticing concert performed by Daniel Schultz (cello) and Sejin Yoon (piano) at The Grand at 3 pm on Saturday 17th January 2026 3:00 pm.

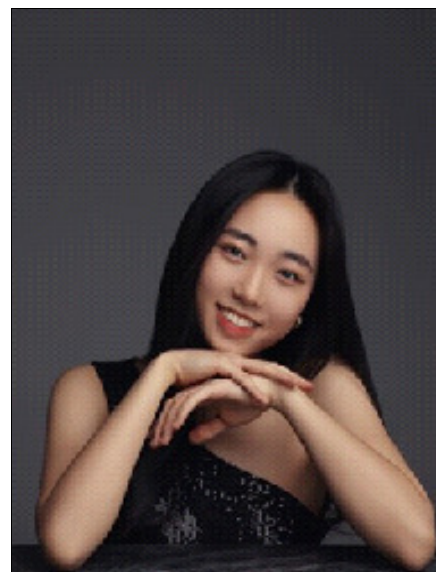
Daniel is an accomplished Finnish cellist currently based in London and Sejin is a South Korean classical pianist, who began her studies the UK at the age of twelve. This concert is supported by the Tillett Trust, which for over 35 years, has supported many hundreds of outstanding young musicians in various ways: offering postgraduate bursaries and grants for performance-related projects, as well as supporting the Tillett Debut recital scheme.

Admission remains at £15 for adults – children and full-time students free. Doors open at 2.30

We do encourage you to book your place online at the following website: www.soundsfolkestone.co.uk and follow the link to Bayle Music. Booking online assures you of a seat and helps us plan these increasingly popular concerts.



Daniel Schultz



Sejin Yoon

How well do you know our church?

Last month we were asked to find a piece of furniture which was made from belfry beams removed from the tower when the new set of bells and framework were installed in 1879. This was pretty hard and I wonder how many of you discovered where and what it is? It is in fact one of the prayer desks in the Eanswythe Chapel. If you look carefully – on your knees probably! –you will discover a brass plaque with the details of its origin. This month we are asked to find a stained glass window commemorating both John the Baptist AND John the Evangelist

Our New Organist and Director of Music

Hello everyone. I'm James Brown, and I am delighted to be joining you as Organist and Choir Director this January. It is a great privilege to become part of your parish community, and I am very much looking forward to making music with you all.

I grew up in Peterborough and first entered the world of music as a trumpeter. Although brass playing was my starting point, it wasn't long before I developed a deep appreciation for choral and liturgical music - an interest that ultimately drew me to Kent to study Music at Canterbury Christ Church University. During my degree I served as Organ Scholar and later as Director of the Chapel Choir. These roles gave me the opportunity not only to deepen my understanding of sacred repertoire but also to explore the joy of shaping a choir's sound and sense of community.



In 2013 I was appointed Director of Music at St Mary of Charity, Faversham, where I oversaw all musical aspects of parish life. I had the pleasure of training and directing the church choir, working with singers of all ages, and taking the choir on tours to cathedrals across the country - a wonderful way to strengthen our musical life and offer the choir new experiences. Around this time, I also became Musical Director of Faversham Choral Society, a large and enthusiastic group whose energy and commitment made rehearsals and performances a real joy. Preparing major choral works with them deepened my passion for bringing communities together through music.

In 2019 I moved to St John the Evangelist, Mongeham, taking up the post of Director of Music. My work there focused particularly on developing the Roman Catholic plainsong tradition. It was immensely fulfilling to create a musical hub where worshipping Catholics from across the south east could experience the beauty and simplicity of chant, and where singers could learn and grow in confidence.

Most recently, in 2025, I became Music Director of the Invicta Jazz Orchestra, which has added yet another dimension to my musical life. Working with such a vibrant ensemble has allowed me to explore a different side of music-making, embracing big-band repertoire and the excitement of live performance with a large, dynamic group of players.

As I join you here, I look forward to drawing on all these experiences - from classical choral music to plainsong to jazz - to help our worship flourish and to support the choir as we grow together. I'm excited to get to know the parish, make music with you, and journey with you in faith and fellowship

James

Rendezvous Subscriptions For 2026 Are Now Due

Subscriptions to Rendezvous run from January to December each year and payment for 2026 is now due. The **annual subscription rate for 2026 is £12**, (the same price as last year), which saves you £2.40 on the cost of 12 individual issues – or to look at it another way, buy 10 get 2 free! If you have any questions about subscriptions or distribution, please contact Catriona Hunter, Distribution Co-ordinator. Her contact details are on the inside front cover of every issue of Rendezvous.

If you have your magazine delivered we have asked your distributor to collect your payment.

Payments to your distributor may be made by cash or cheque made out to Rendezvous Magazine (preferably in an envelope addressed to Catriona Hunter, Rendezvous Distribution Co-ordinator – but don't forget to include your name and address too). However, if you wish to pay by credit card you can do this in one of three ways:

- i. use the Donation Station in church
- ii. use the Donate button on our website <https://stmaryandsteanswythe.org>;
- iii. scan the QR code on the back cover of Rendezvous

Note that if paying by credit card it would help us enormously if you would let Catriona know that you have paid your subscription so she can keep a record of subscribers.

If you pay by subscription but collect your own copy in church you can pay in any of the ways outlined above – envelopes containing cash or cheques can be placed in the donations box in church.

Thank you for reading Rendezvous. Rendezvous is an important source of income for our church, but it also provides information about our church, parish, and community, and generates a sense of community by including contributions from a wide range of people from the church and community at large.



An Epiphany Prayer

Lord, as we glory in the radiance of your Son, we pray that we may make him visible to the world through the integrity of our lives.

Lord of all,
the glory of your son is made manifest
In the homage of the magi,
the voice from the heavens
and the miracle of the water become wine.
Help us, who dwell in the shadows of this changing world,
see the light of his eternal splendour,
that we may be faithful in worship,
fervent in proclamation
and joyous in his company,
through the same Jesus Christ our Lord.

Collects for the Church and the World
Rev M. J. Kramer
Chaplain Keble College Oxford

Royal Presents

The off' rings of the Eastern kings of old
Unto our lord were incense, myrrh and gold;
Incense because a God; gold as a king;
And myrrh as to a dying man they bring.
Instead of incense, Blessed Lord, if we
Can send a sigh or fervent prayer to thee,
Instead of myrrh if we can but provide
Tears that from penitential eyes do slide,
And though we have no gold; if for our part
We can present thee with a broken heart
Thou wilt accept: and say those Eastern kings
Did not present thee with more precious things.

Nathaniel Wanley 1634-1680



D.E. Sutton

Plumbing and Heating
Systems Power Flushed
Gas Services - Property Maintenance
Darrell Sutton

Greenbanks, 304 Dover Road,
Folkestone, Kent CT19 6NZ
Telephone: 01303 226099
Mobile: 07986 807676

darrell.sutton@ntlworld.com



stem by stem

.....love flowers

Visit our lovely Victorian shop for top quality, seasonal flowers, plants and other gifts.

Flowers for funerals, christenings, weddings, birthdays, anniversaries.

Wide area covered for local deliveries.

Open six days a week 9-5
National and international delivery service available via Interflora

**5 Church Street
Folkestone CT20 1SE
01303 252626**

OCLEE & SON

JEWELLERS-
OFFICIAL SERVICE AGENTS FOR



*Quality Jewellery, New and Secondhand,
Modern Silver Jewellery, Specialist Repair Service*

35 SANDGATE ROAD, FOLKESTONE CT20 1SD

Tel: (01303) 252654

email: contact@ocleeandson.co.uk

**You could
Advertise
HERE!**

DJANGO'S
JAZZ CAFÉ & TERRACE



17 Rendezvous Street
enough said



You can pay for Rendezvous and other merchandise, or make a donation by scanning this QR code.

CHANNEL CARS
~~~~~

**For a prompt efficient service**

**Any destination**

**FOLKESTONE**

**(01303) 252 252**

## **W. J. Farrier & Son Ltd.**

### **Funeral Directors**

Independent Family Concern

Established 1948

24 Hour Personal Service

“Let our family help yours”

**FOLKESTONE**

**37 Bouverie Road West**  
**01303 245500**

**DOVER**

**161 London Road**  
**01304 201665**



**British Lion**

The Real Ale Capital  
of Folkestone

**Nick and Dee**

Welcome you to their  
Warm and friendly atmosphere  
With good beers and  
Home cooked food  
10 The Bayle, Folkestone,  
Kent CT20 1SQ  
01303 251478

**MOTIS**  
ESTATES

Sales, Lettings and Commercial Agent,  
RICS Valuation and Holiday Letting  
Services

Suites 1&2, Motis Business Centre,  
Cheriton High Street, CT19 4QJ

**Tel:** 01303 212020

**Email:** sales@motis-estates.com

**Web:** www.motis-estates.com

Lettings Agent of the Year 2025, in the  
Kent Business Awards